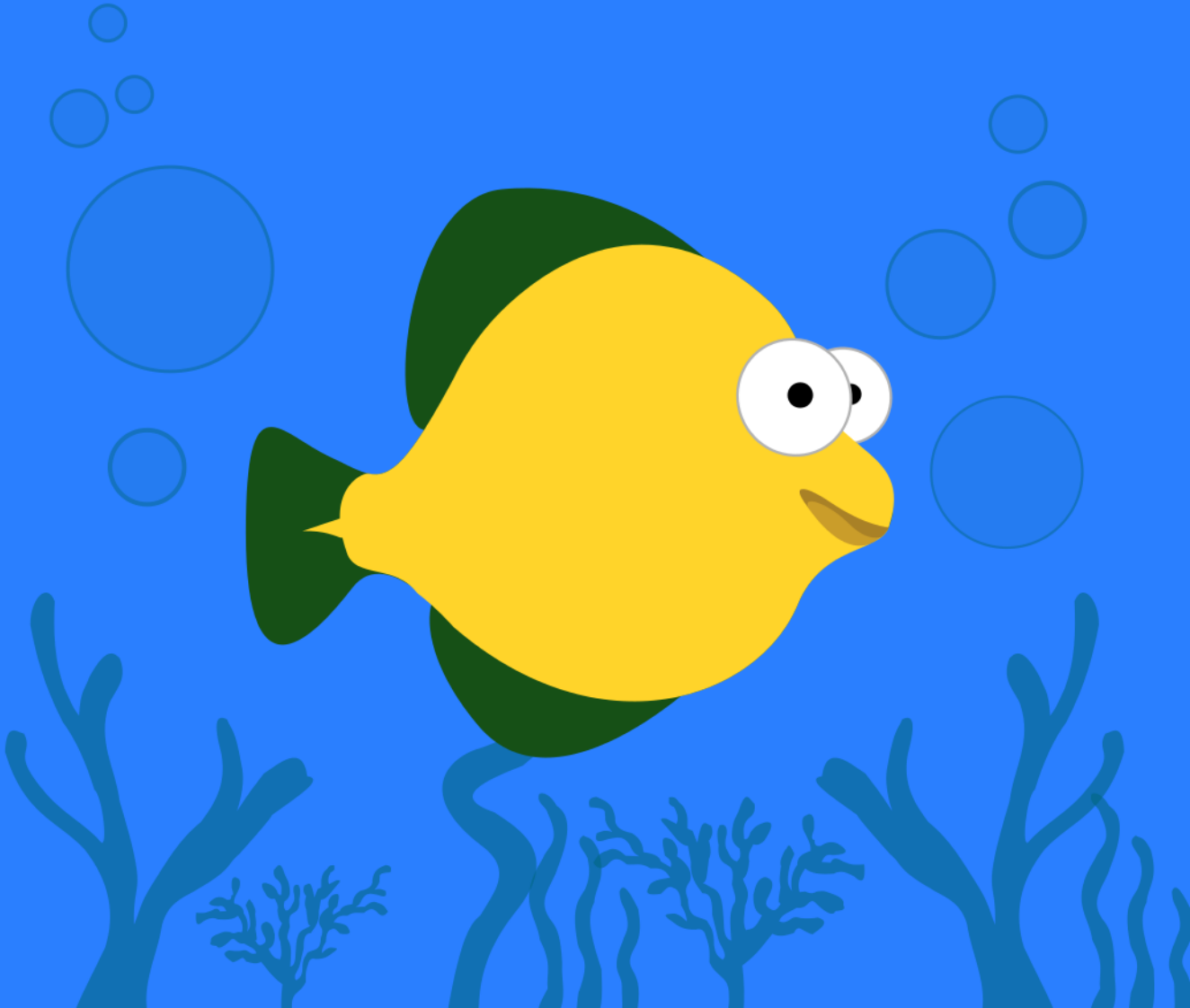
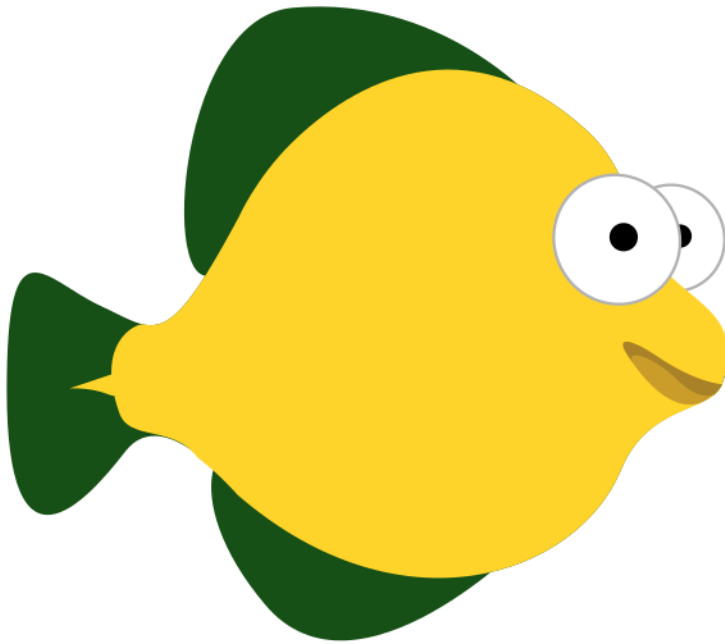


kala Makala o kalama a!





toki musi li tan jan Nikola

*tawa jan lili Pasi
tawa jan lili Sowe*

toki! o kama pona tawa ma telo

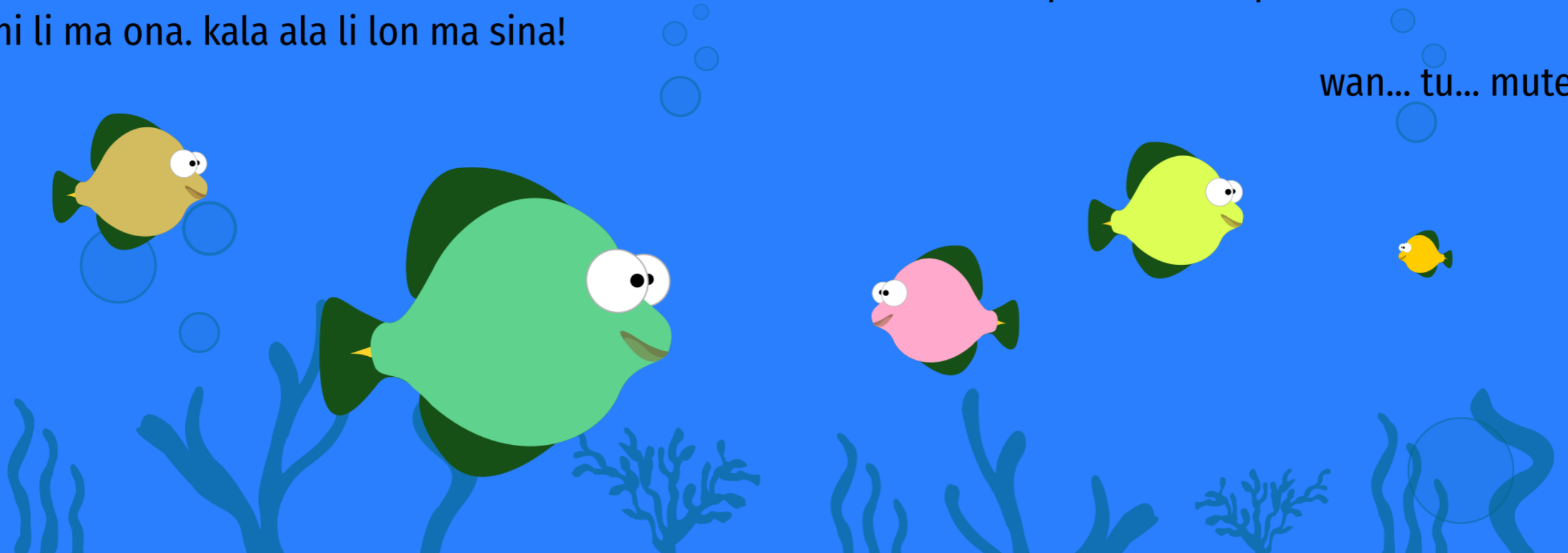
kala ale li lon ma ni
kala la, ma telo li ma kala

ni li ma ona. kala ala li lon ma sina!

ma kala la, kala mute li lon
sina ken ala ken alasa e kala lili?
e kala sulii?

o lukin pona a! kala pi mute seme li lon?

wan... tu... mute!

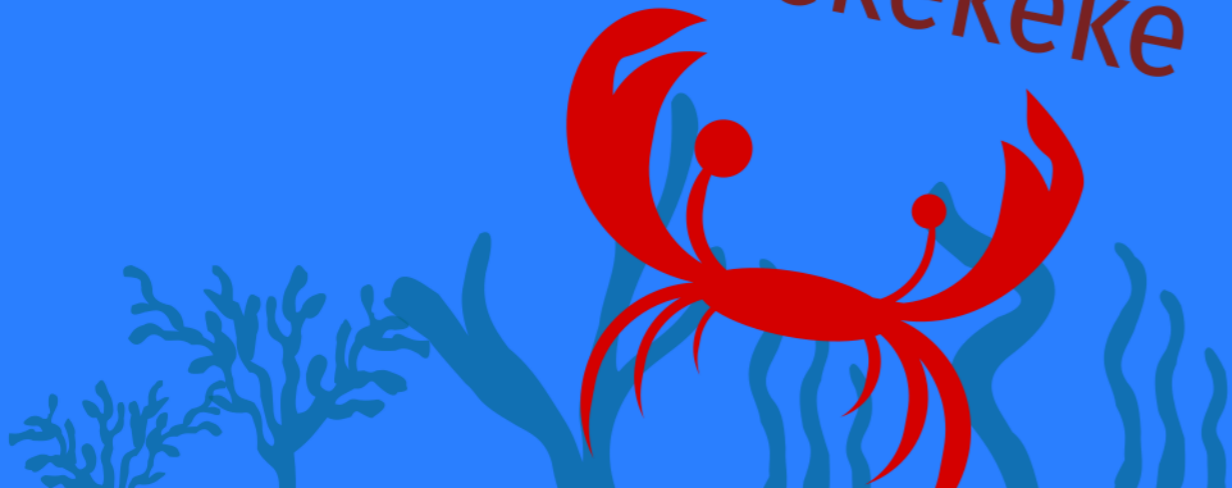


ma kala la, kalama mute li lon

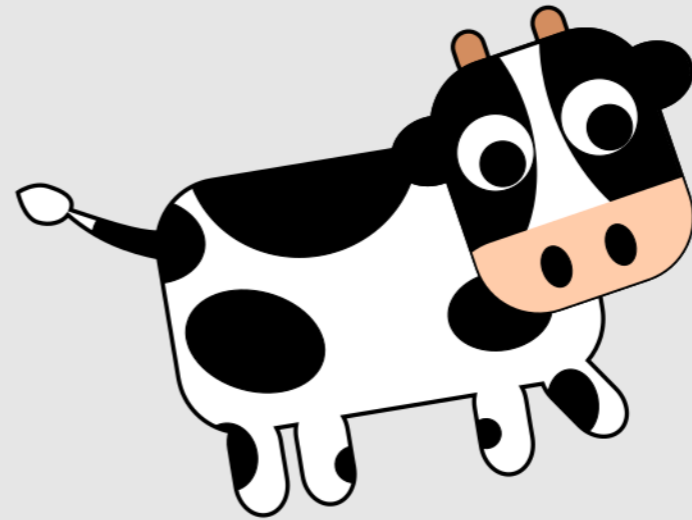
PA!

Wooooooo

Kekekekekeke



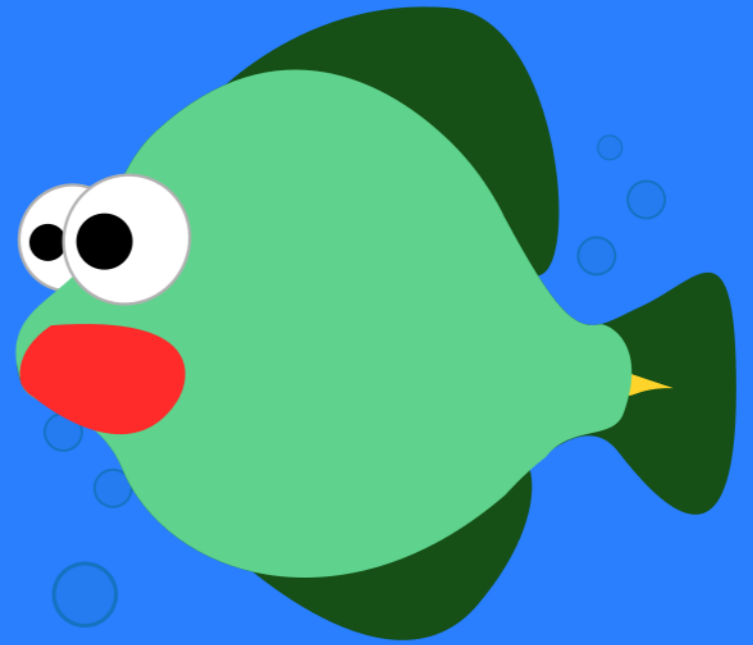
ma sina la, kalama mute li lon kin
sina sona ala sona e kalama pi ijo ni?



mi o pana e sona nasa tawa sina...

kala li ken kalama a!

seme a!?



a! kala ale ala li ken... kala pi mute lili li ken

ni li kala Makala a!

kala Makala li wile kama kala kalama

kala kalama li kepeken uta ona
tawa kalama pona

sina ken ala ken kalama pona
kepeken uta sina?

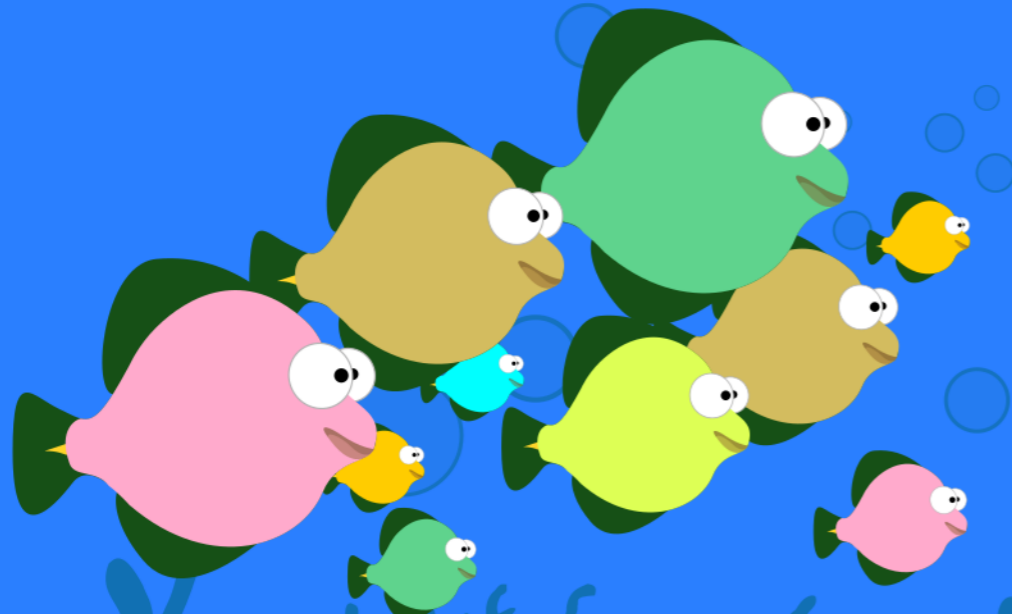


a! pona a!



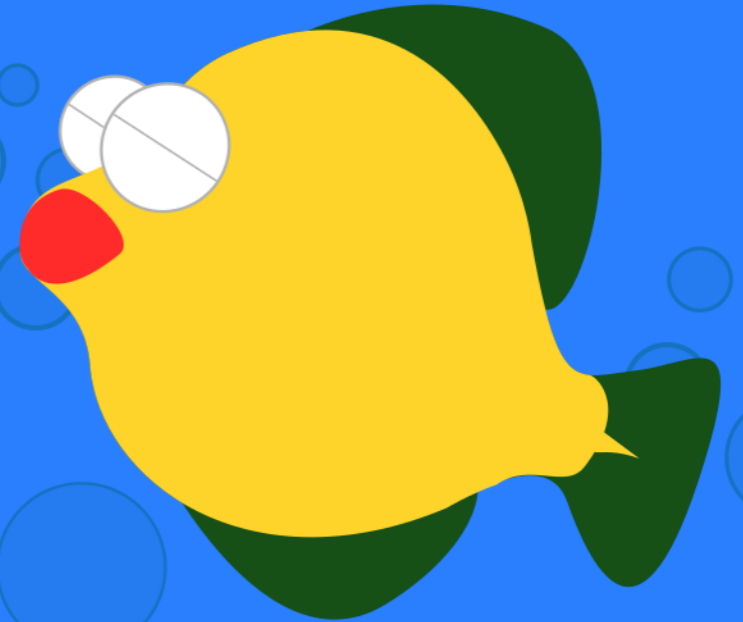
open la, kalama ona li pona lili
taso kala Makala li pali wawa lon tenpo suli!

ni la, kalama ona li kama pona mute
tawa kala ale pi ma kala



kala Makala li kalama e kalama pona ni:

kala kala kalaaaaaaaaaaaa!

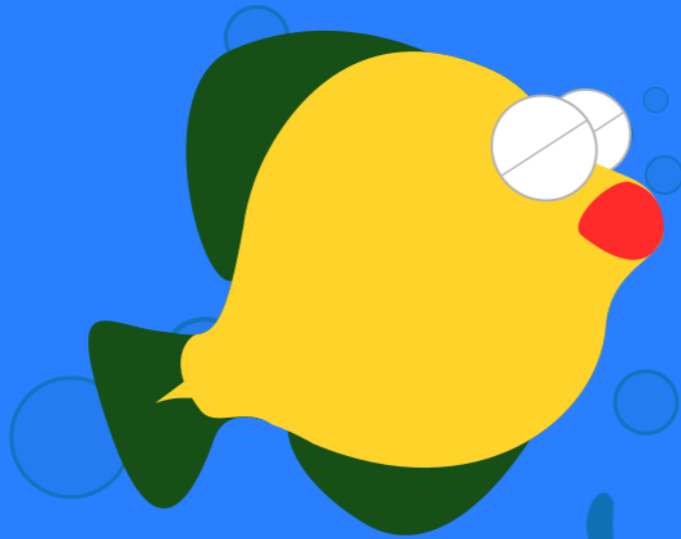


kala kalama li suli mute tawa ma kala ale la
kala ale li pilin pona mute tawa kala Makala!

taso tenpo wan la... ike a li kama!

suno li kama la
kala kalama li pali e kalama uta ona la
uta ona li kama pakala

kala Makala li kama kalama la
kalama pakala li kama a!



Pa! Pa! Pa!

Woooo! Wooooo!

Kekekekeke!

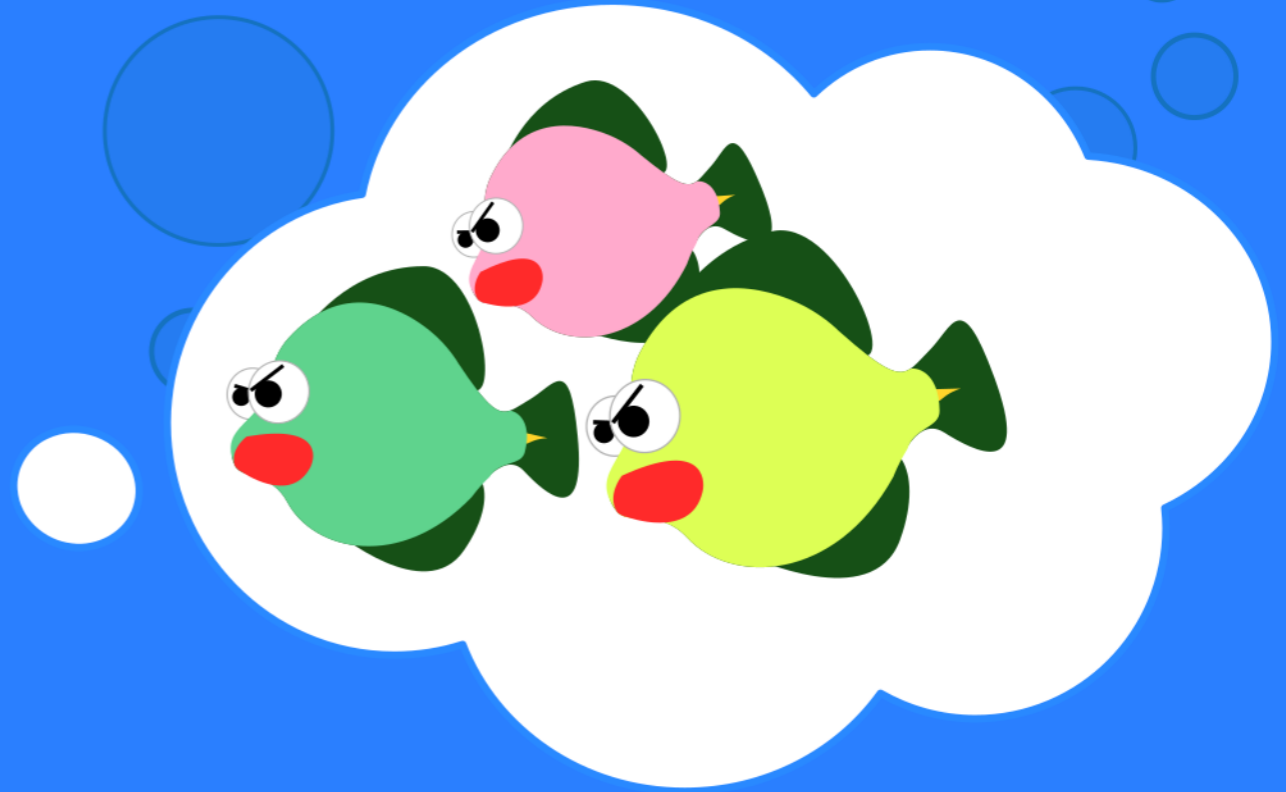
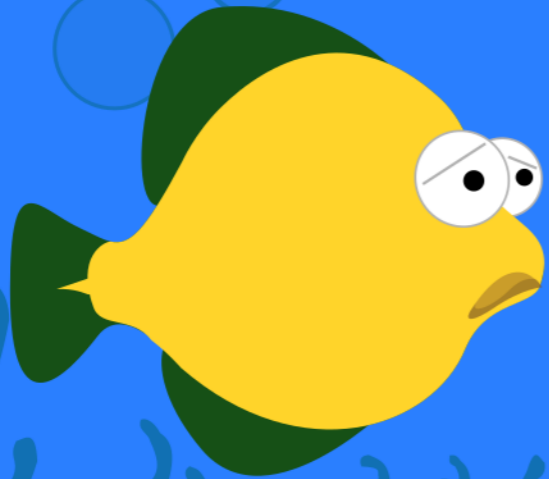
kala Makala li kama pilin nasa...

kalama ona li ante, li pakala, li nasa mute a!

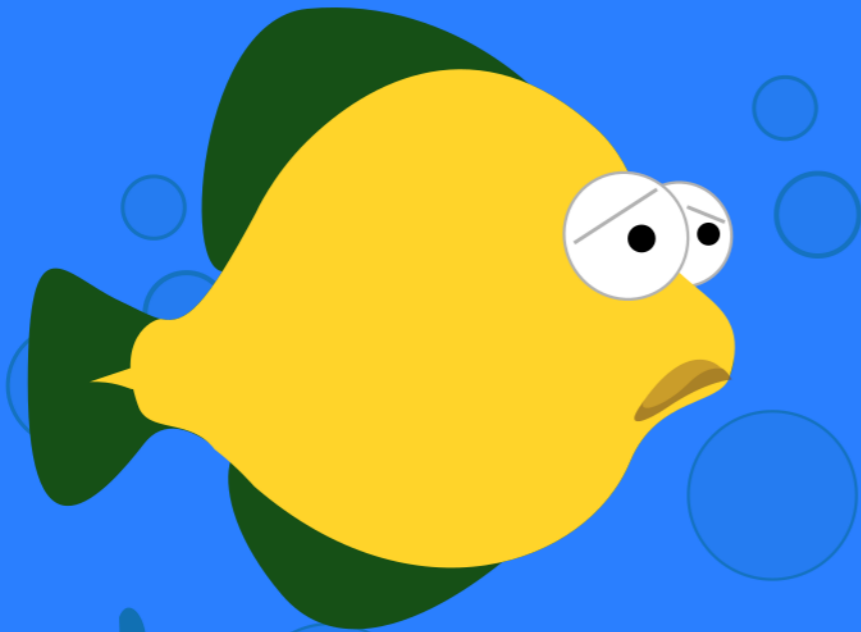
ken la kala ante pi ma kala

li kama pilin utala

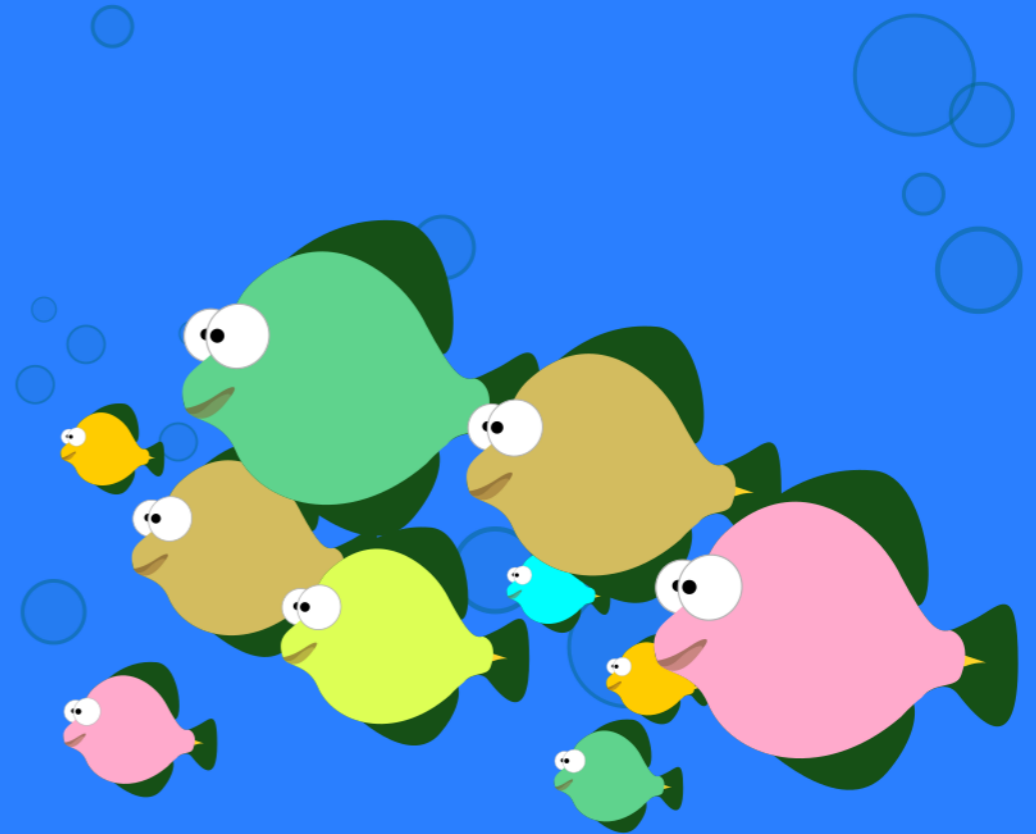
li kama pilin e ni: ona li ike, li suli ala!



tenpo kalama li kama la
kala Makala li wile ala kalama



taso kala ale li toki tawa ona: o kalama a!



ni la ona li open e uta ona, li open kalama...

nasa la, ona li kalama sama ilo toki!

nasa mute la, ona li kalama sama waso mun!

nasa wawa la, ona li mu sama soweli!

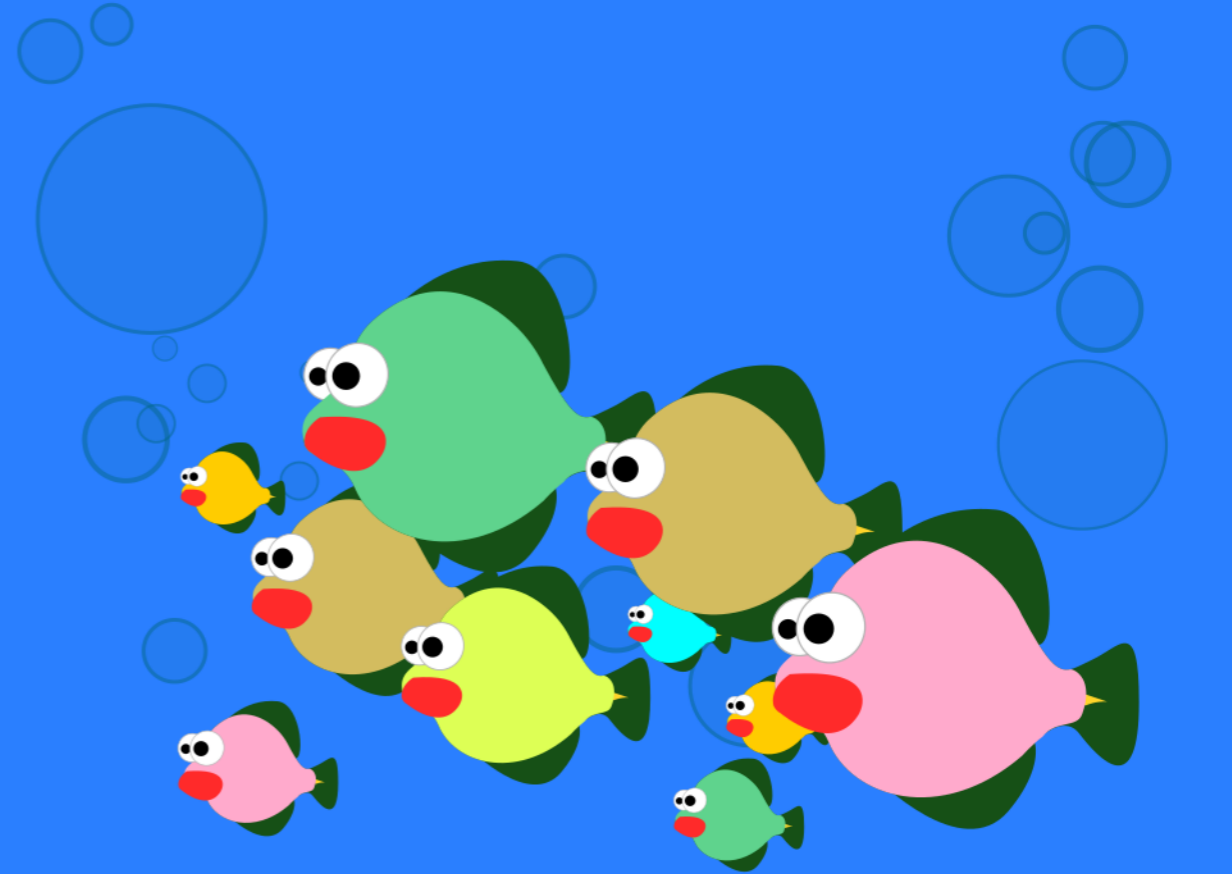
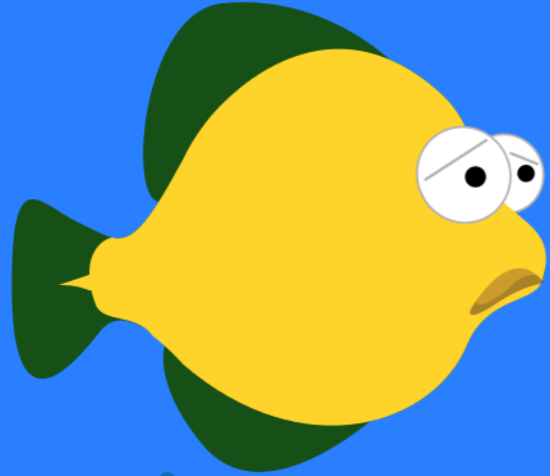
tenpo lili la
kala ale li pana e uta pi pilin nasa wawa a!



nasa mute a! kala o kalama ni ala, anu seme?...

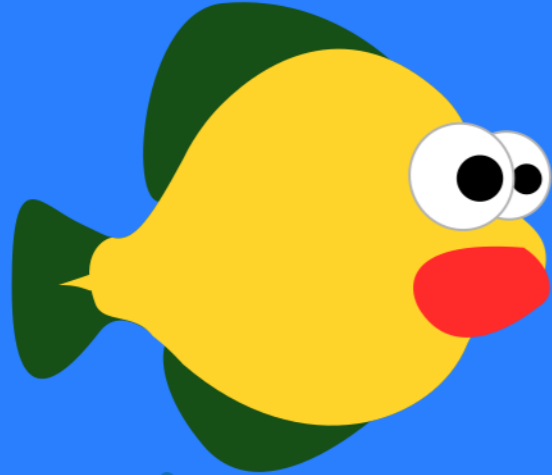
kalama ni li nasa ala nasa tawa sina?

sina la, tenpo poka la
seme li kama?



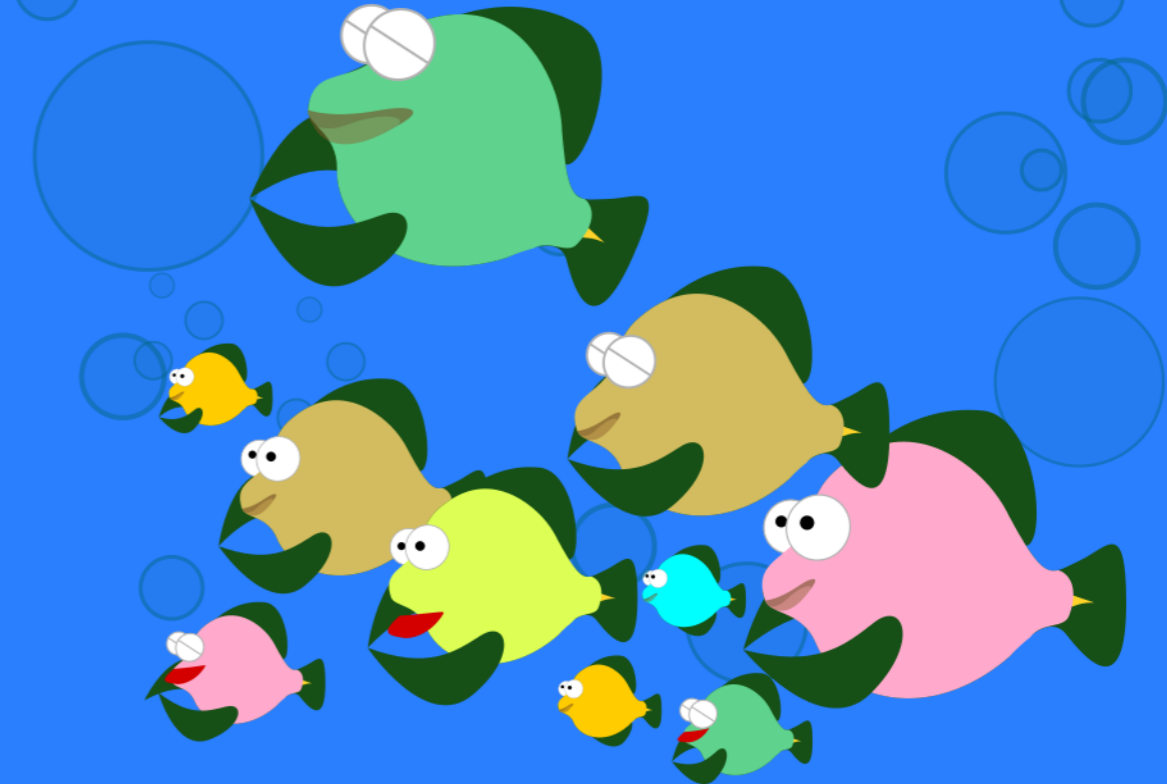
kala ale li kama utala pona e luka ona,
li kama toki wawa e pilin pona ona

kala Makala li nasa mute tan ni!
kala li pilin pona tawa kalama nasa ona



pona a! pona a!

o kalama kin!



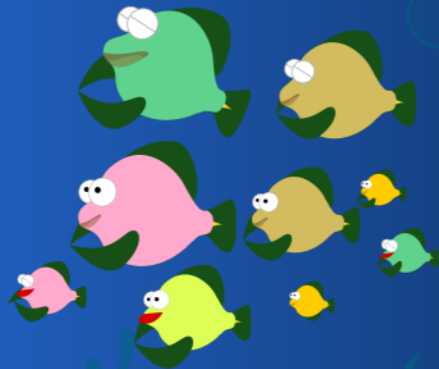
kala ale li pilin pona mute tan kalama nasa a!
ona li wile awen kute

tenpo pimeja kama la
kala Makala li awen pana e kalama nasa mute

kala ale pi ma kala li kama kute e kalama nasa
li pini lon tenpo lape taso

Pa! Po! Pa! Po!

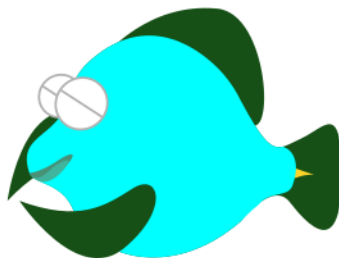
Li! Lu! Li! Lu!



tenpo ni la
kala Makala li kama sona e ijo pona:

nasa la, nasa li ken pona wawa

tenpo kama la, sina o kalama nasa kin!



*lipu ni li kepeken sitelen mute tan lipu OpenClipArt.org
mi ante lili e ona*

lipu ni li kama lon tenpo sike nanpa mute ale mute tu tu

o pana e lipu ni tawa jan lili ale a!

lipu ni li lon nasin CC BY-SA 4.0

<https://creativecommons.org/licenses/by-sa/4.0/>

kala Makala li ken kalama a!

taso, kalama li kama pakala la
seme li kama...?

